



[→ See All Eaton ePDU G3 Basic Documentation](#)

[→ See all Eaton ePDU G3 Basic models](#)

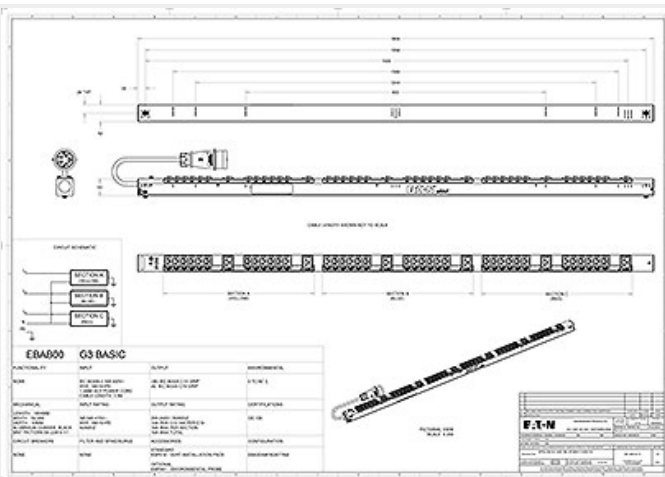
EBAB00

ePDU BA 0U (309 16A 3P)36XC13:6XC19

General

Function BA

Drawing



Style Number EBAB00

Part Number EBAB00

Availability Usually in stock

U Height 36

Physical

Dimensions (H x W x D, mm) 52x53x1604

Mounting Style Button mounting on rear and sides, variable mounting bracket

Input

Max kW 12

Plug (1) IEC 60309 16A 3Ph



Cable Length (m) 3

Voltage 400V


Current 16A

Current Monitoring None

Phase Three-phase

Frequency 50Hz

Output

Grip cable retention	Yes	
Outlets	(36) IEC-320-C13	(6) IEC-320-C19
		
Outlet Control	No	

Protection & Filtering

Spike/Surge Suppression	None
EMI/RFI Filter	None

Control & Interface

Operating Temperature	60 Degrees C
Serial Interface	None
Environmental Interface	No
Ethernet Interface	No
Voltage Monitoring	no

Environmental & Approval Standards

Approvals	CB, CE, EN 60950-1:2006/A11:2009/A1:2010/A12:2011 Safety - Part 1: General Requirements, IEC 60950-1(ed.2), IEC 60950-1(ed.2);am1 EN 55022:2010 Radio Disturbance characteristics - Limits and methods of measurement. EN 55024:2010 Immunity characteristics - Limits and methods of measurement.
Electromagnetic compatibility	EN 61000-6-2:2005 Part 6-2: Generic standards - Immunity for industrial environments EN 61000-6-4:2007+A1:2011 Part 6-4: Generic standards - Emission standard for industrial environments
Environmental	RoHS Directive – 2011/65/EU, EN 50581 : 2012, REACH Regulation (CE No. 1907/2006), WEEE directive 2012/19/EU, PEP ecopassport (Basic ePDUs) Packaging: 100% recycled, 100% recyclable: no plastic, no metal, no foam.
Manufacturing Plant	ISO 9001:2008 / ISO 14001:2004

Warranty

Standard warranty	2 years
-------------------	---------

[Privacy Policy](#)
[Terms & Conditions](#)
[Copyright](#)

© 2017 Eaton
 All Rights Reserved