



[→ See All Eaton ePDU G3 Managed Documentation](#)

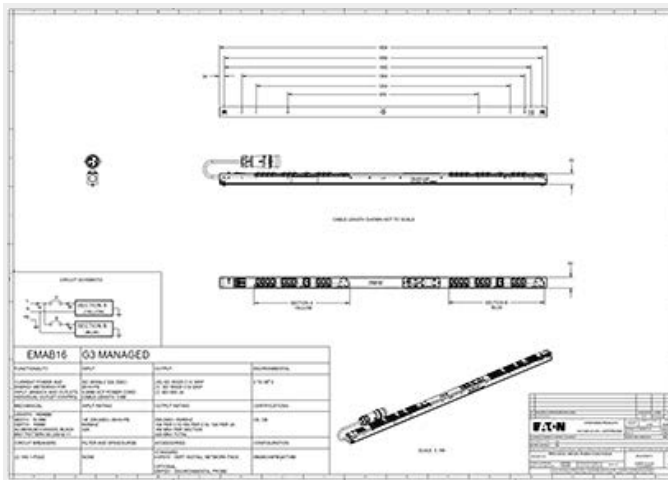
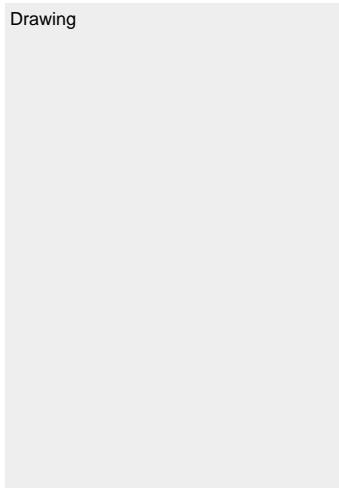
[→ See all Eaton ePDU G3 Managed models](#)

## EMAB16

EPDU MA 0U (309 32A 1P) 20xC13: 2xC19: 2xUK

### General

Function MA



Style Number	EMAB16
Part Number	EMAB16
Availability	Usually in stock
U Height	36
MIB	available for download

### Physical

Dimensions (H x W x D, mm)	52x53x1604
Mounting Style	Button mounting on rear and sides, variable mounting bracket




### Input

Max kW	7
Plug	(1) IEC 60309 32A



Cable Length (m)	3
Voltage	230V
Current	32
Phase	Single-phase
Frequency	50Hz

## Output

Grip cable retention	Yes
Outlets	(20) IEC-320-C13      (2) IEC-320-C19      (2) BS
	  
Circuit Breakers	2 single pole
Outlet Control	No

## Protection & Filtering

Spike/Surge Suppression	None
EMI/RFI Filter	None

## Control & Interface

Daisy Chain	8 ePDUs
Operating Temperature	60 Degrees C
Hot Swap Network and Control	Yes
Communication and Protocols	HTTP, HTTPS, SSL, Telnet, FTP, SNMP, SMTP, DNS, DHCP, LDAP, RADIUS
Optional Temperature and Humidity probe	EMP001
Serial Interface	Yes
Environmental Interface	Yes
Ethernet Interface	Yes
Voltage Monitoring	Yes

## Metering and Switching

Metering	Outlet and Equipment Monitoring across A and B feed
Metering Characteristics	V, W, A and kWhr, Active power, Apparent Power, Peak Power
Metering Accuracy	IEC Class 1 Billing grade Accuracy
Level 3 PUE measurements	Yes
Circuit breaker status monitoring	Yes
Switching	Outlet and Equipment Switching across A and B feed

## Environmental & Approval Standards

Approvals	CB, CE, EN 60950-1:2006/A11:2009/A1:2010/A12:2011 Safety - Part 1: General Requirements, IEC 60950-1(ed.2), IEC 60950-1(ed.2);am1 EN 55022:2010 Radio Disturbance characteristics - Limits and methods of measurement. EN 55024:2010 Immunity characteristics - Limits and methods of measurement.
Electromagnetic compatibility	EN 61000-6-2:2005 Part 6-2: Generic standards - Immunity for industrial environments EN 61000-6-4:2007+A1:2011 Part 6-4: Generic standards - Emission standard for industrial environments
Environmental	RoHS Directive – 2011/65/EU, EN 50581 : 2012, REACH Regulation (CE No. 1907/2006), WEEE directive 2012/19/EU, PEP ecopassport (Basic ePDUs) Packaging: 100% recycled, 100% recyclable: no plastic, no metal, no foam.
Manufacturing Plant	ISO 9001:2008 / ISO 14001:2004

## Warranty

Standard warranty	2 years
-------------------	---------

