



[→ See All Eaton ePDU G3 Metered Input Documentation](#)

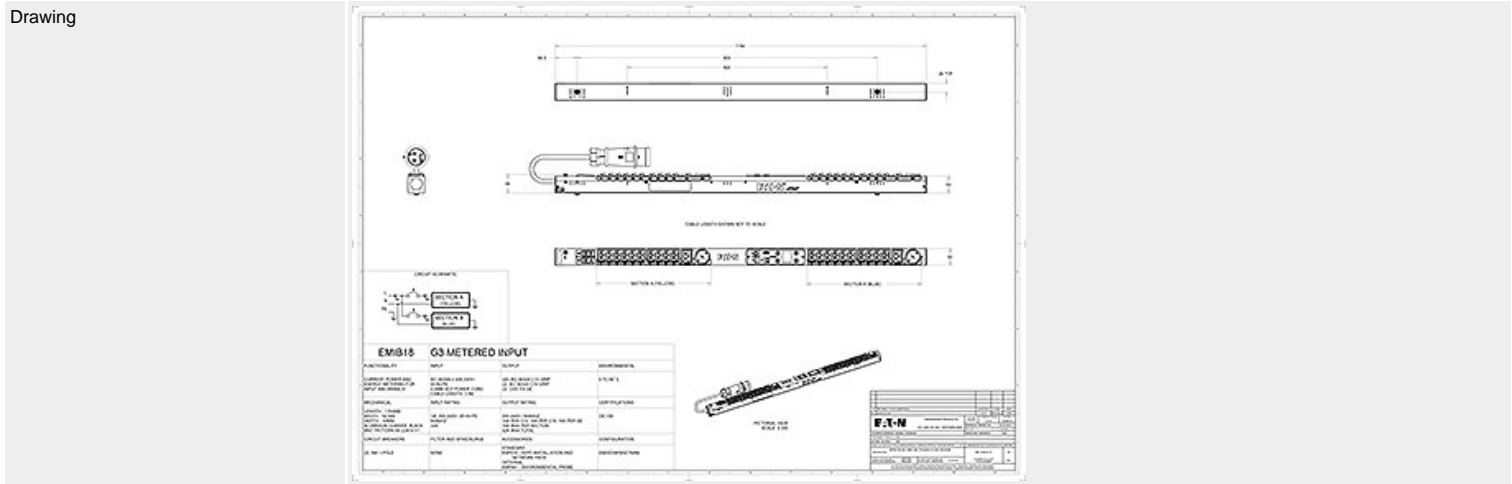
[→ See all Eaton ePDU G3 Metered Input models](#)

## EMIB18

ePDU MI 0U (309 32A 1P)20XC13:2XC19:2XGE

### General

Function MI



|              |                        |
|--------------|------------------------|
| Style Number | EMIB18                 |
| Part Number  | EMIB18                 |
| Availability | Usually in stock       |
| U Height     | 26                     |
| MIB          | available for download |

### Physical

|                            |  |
|----------------------------|--|
| Dimensions (H x W x D, mm) | 52x53x1154   |
| Mounting Style             | Button mounting on rear and sides, variable mounting bracket |




### Input

|        |                   |
|--------|-------------------|
| Max kW | 7                 |
| Plug   | (1) IEC 60309 32A |



|                    |              |
|--------------------|--------------|
| Cable Length (m)   | 3            |
| Voltage            | 230V         |
| Current            | 32           |
| Current Monitoring | Yes          |
| Phase              | Single-phase |
| Frequency          | 50Hz         |

## Output

|                      |  |
|----------------------|--|
| Grip cable retention | Yes  |
| Outlets              | (20) IEC-320-C13      (2) IEC-320-C19      (2) Schuko<br>   |
| Circuit Breakers     | 2 single pole  |
| Outlet Control       | No   |

## Protection & Filtering

|                         |      |
|-------------------------|------|
| Spike/Surge Suppression | None |
| EMI/RFI Filter          | None |

## Control & Interface

|   |  |
|---|--|
| Daisy Chain                             | 8 ePDUs  |
| Operating Temperature                   | 60 Degrees C   |
| Hot Swap Network and Control            | Yes  |
| Communication and Protocols             | HTTP, HTTPS, SSL, Telnet, FTP, SNMP, SMTP, DNS, DHCP, LDAP, RADIUS |
| Optional Temperature and Humidity probe | EMP001   |
| Serial Interface                        | Yes  |
| Environmental Interface                 | Yes  |
| Ethernet Interface                      | Yes  |
| Voltage Monitoring                      | Yes  |

## Metering and Switching

|                          |  |
|--------------------------|--|
| Metering                 | Input, Branch, Phase                                       |
| Metering Characteristics | V, W, A and kWhr, Active power, Apparent Power, Peak Power |
| Metering Accuracy        | IEC Class 1 Billing grade Accuracy                         |

## Environmental & Approval Standards

|                               |  |
|-------------------------------|--|
| Approvals                     | CB, CE, EN 60950-1:2006/A11:2009/A1:2010/A12:2011 Safety - Part 1: General Requirements, IEC 60950-1(ed.2), IEC 60950-1(ed.2);am1 EN 55022:2010 Radio Disturbance characteristics - Limits and methods of measurement. EN 55024:2010 Immunity characteristics - Limits and methods of measurement. |
| Electromagnetic compatibility | EN 61000-6-2:2005 Part 6-2: Generic standards - Immunity for industrial environments EN 61000-6-4:2007+A1:2011 Part 6-4: Generic standards - Emission standard for industrial environments   |
| Environmental                 | RoHS Directive – 2011/65/EU, EN 50581 : 2012, REACH Regulation (CE No. 1907/2006), WEEE directive 2012/19/EU, PEP ecopassport (Basic ePDUs) Packaging: 100% recycled, 100% recyclable: no plastic, no metal, no foam.  |
| Manufacturing Plant           | ISO 9001:2008 / ISO 14001:2004   |

## Warranty

|                   |         |
|-------------------|---------|
| Standard warranty | 2 years |
|-------------------|---------|

